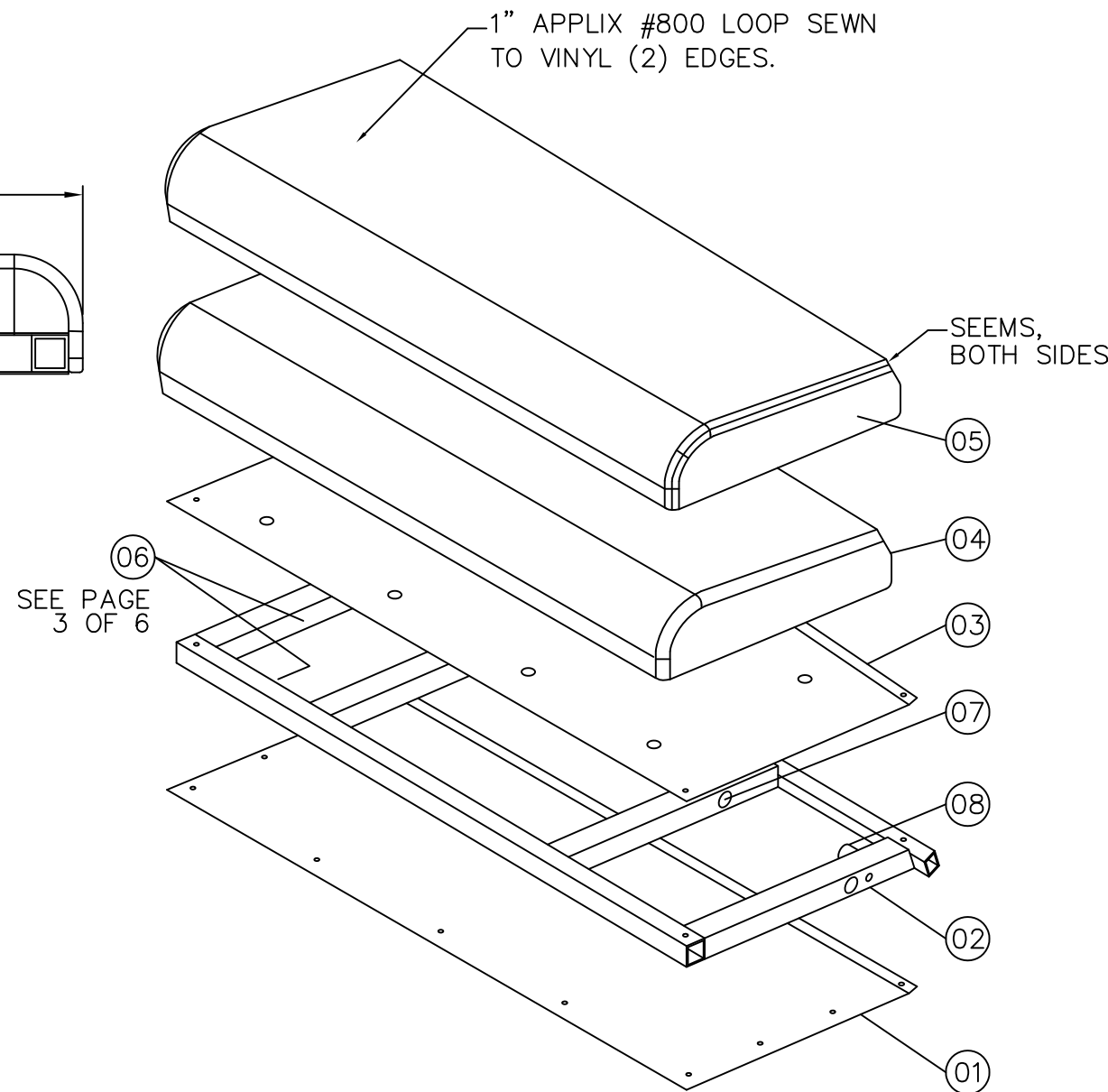


ASSEMBLY, FOLD-UP, SEAT BOTTOM (00)



GENERAL NOTES:

1. L18-11-3121, CHESAPEAKE SAND: NEW ASSEMBLY P/N.
2. V18-11-3121, CHESAPEAKE SAND: VENDOR REWORK P/N.
3. SAMPLES WILL BE PROVIDED FOR PRODUCTION PURPOSES.
4. FOAM BONDED TO PAN WITH K-GRIP 200 CONTACT ADHESIVE.
5. DEBURR AND REMOVE ALL SHARP EDGES AND CORNERS.
6. DIMENSION UNITS ARE INCHES [MILLIMETERS].

**CONTROLLED**

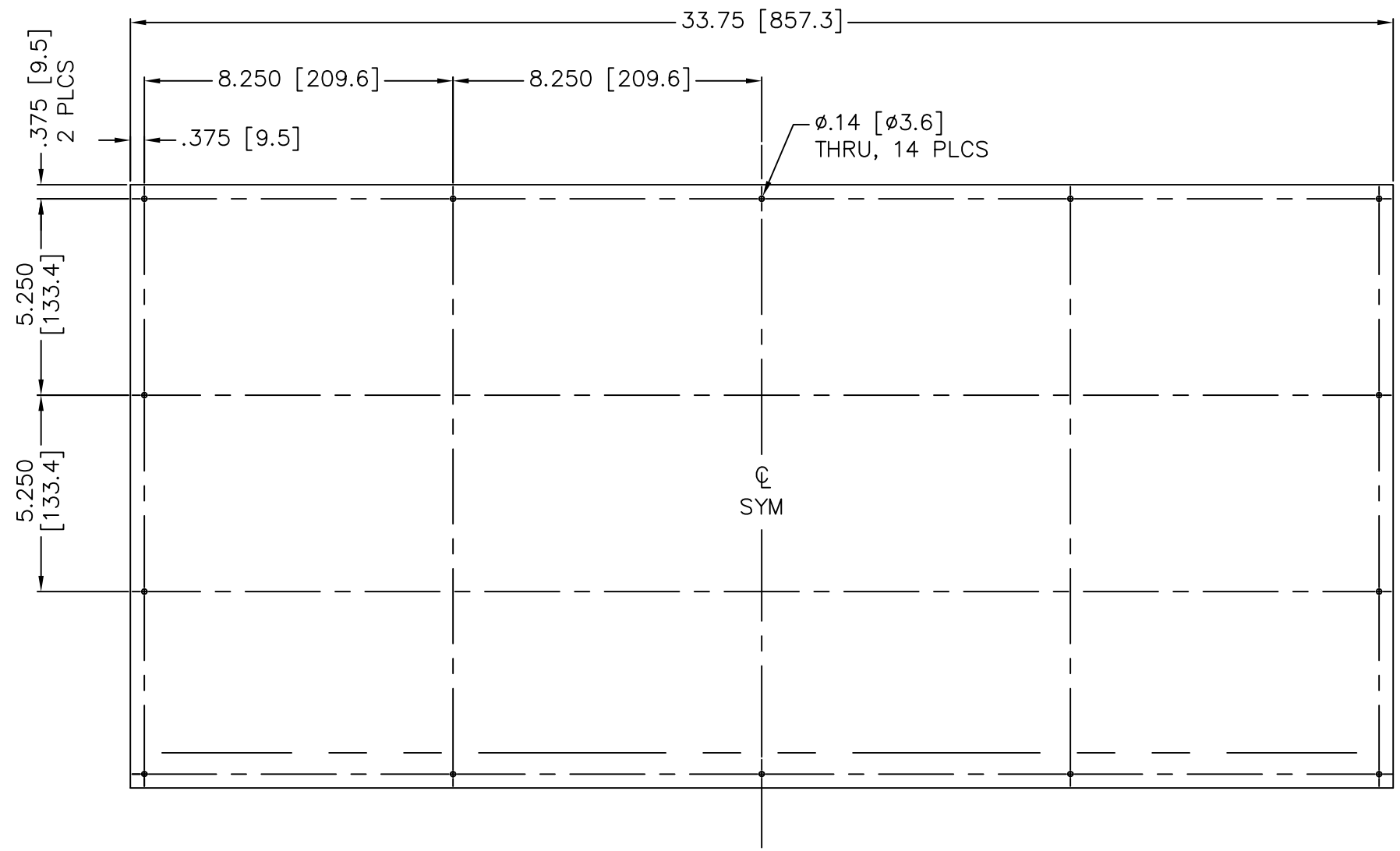
Item No.	QTY	P/N	Description	Material/Spec	Weight/Dimensions
09	1		LABEL, (DESCRIPTION, MFG, P/N)	PAINTED STENCIL OR INDELIBLE INK LABEL	>1.5" x 6"
08	4		THREADED STANDOFF, WELDED	STEEL, COMMERCIAL QUALITY	
07	2	B18-11-5462	BUSHING, FOLD-UP, SEAT ROD	UNITED PRODUCTS CORP. MFG# 355R-100-343	
06	1		APPLIX, 1in x7ft, #800 HOOK PAIHO R1001H-25 OR EQUAL	POLYAMIDE, CUT TO FIT	
05	1		UPHOLSTERY, COVER, FOLD-UP, SEAT BOTTOM	OMNOVA PREVAILL W/PREFFIX SEE SHEET 4	
04	1		FOAM, FOLD-UP, SEAT BOTTOM	FOAM, CHESTNUT RIDGE SAFEGUARD XL, MEDIUM-HIGH DENSITY NEOPRENE	
03	1	020-CP0278	PAN, FOLD-UP, SEAT BOTTOM	LOW CARBON STEEL, COMMERCIAL QUALITY IN ACCORDANCE W/ASTM A-366	.07 THK
02	1	020-CP0100	FRAME, FOLD-UP, SEAT BOTTOM	STEEL, COMMERCIAL QUALITY	
01	1	020-CP0160	PAN, FRAME COVER, FOLD-UP, SEAT BOTTOM	LOW CARBON STEEL, COMMERCIAL QUALITY IN ACCORDANCE W/ASTM A-366	.06 THK
00	1		ASSEMBLY, FOLD-UP, SEAT BOTTOM		

Rev.	Description & Date	Undim. Wall Thk.:	Undim. Radii:	Undim. Edges:	Scale:	Sheet Size:	Next Assembly:	Part. No.:	Dwg. No.:	Sheet:
C	PAGE 10F4, REVISED BOM AND GENERAL NOTES. PAGE 40F4, REVISED/ADDED MAT'L ID P/N. 21MAR12 ALC	UNLESS OTHERWISE SPECIFIED FRACTIONS ±1/16" DECIMALS .X			NOT TO SCALE	B		L18-11-3121	WDL18113121-C	1 of 6
B	REMOVED REFERENCE TO WMATA SPECIFICATIONS, CHAPTER 10.0, PAGE 4 06FEB12 ALC	.XX±.03 [.76] .XXX±.010 [.254]	ANGLES ±1°							
A	REVISED UPHOLSTERY COVERS AS PER VENDOR PROVIDED DATA. 05JAN12 ALC	UPHOLSTERY ±.25 [6.35]								
-	INITIAL RELEASE. 07JUN11 ALC									

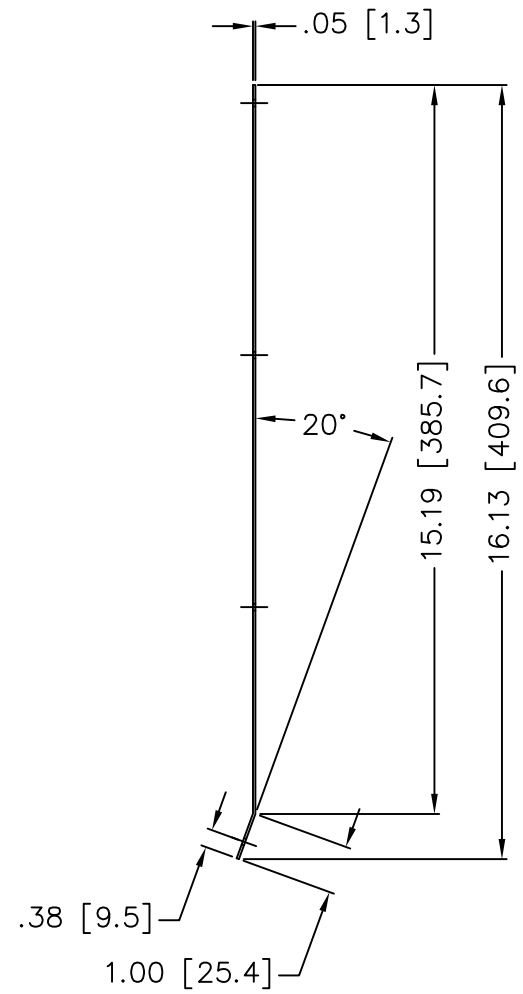
Drawn by: *Int.* Date: A.CREECH *ACC* 07JUN11  
 Engr. Approval: *Int.* Date: Jeffery A. Thompson  
 Approved by: *Int.* Date: Manuel A. Lopez

IF THIS DOCUMENT IS NOT MARKED "CONTROLLED" IN RED, THEN IT SHOULD BE USED AS REFERENCE ONLY.  
 THE DESIGN, CONCEPT AND INFORMATION CONTAINED IN THIS DRAWING IS PROPRIETARY TO WASHINGTON METROPOLITAN AREA TRANSIT AUTHORITY AND MAY NOT BE REPRODUCED, USED OR DISCLOSED WITHOUT WRITTEN PERMISSION OF SAID COMPANY.

**M metro** WASHINGTON METROPOLITAN AREA TRANSIT AUTHORITY  
 Title: 2K/3K & 4K SERIES ASSEMBLY, FOLD-UP, SEAT BOTTOM CAR BODY  
 Part. No.: L18-11-3121  
 Dwg. No.: WDL18113121-C Sheet: 1 of 6



PAN, FRAME COVER, FOLD-UP, SEAT BOTTOM (01)  
PART IS SYMETRICAL ABOUT CENTERLINE

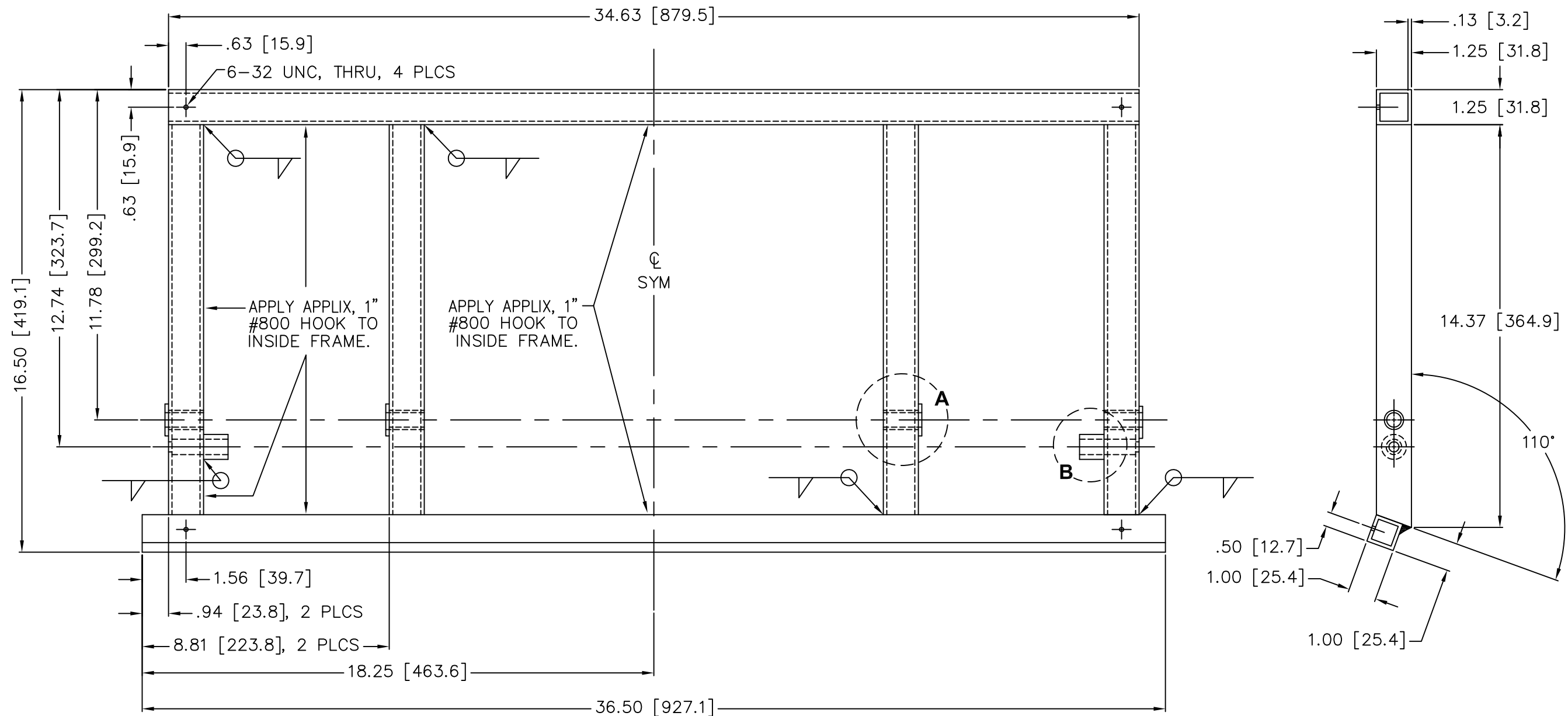


**CONTROLLED**

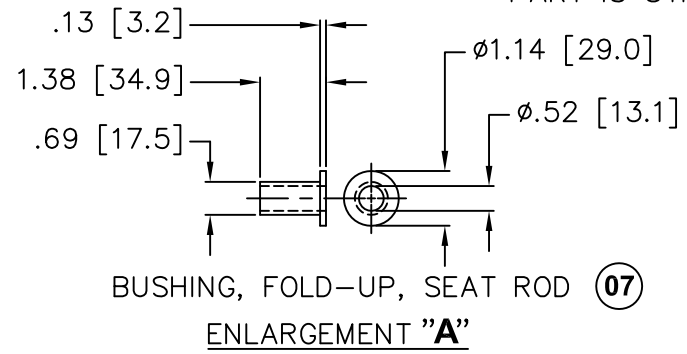
GENERAL NOTES:

1. PAINT: SPRAY POLYURETHANE SHERWIN WILLIAMS, WHITE.
2. DEBURR AND REMOVE ALL SHARP EDGES AND CORNERS.
3. SAMPLES WILL BE PROVIDED FOR PRODUCTION PURPOSES.

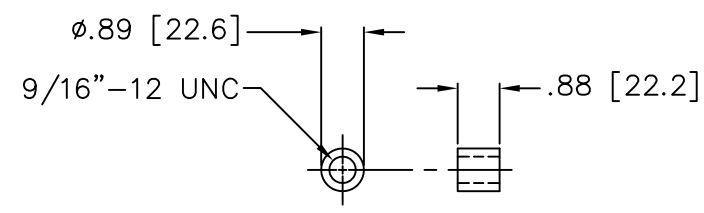
C	PAGE 10F4, REVISED BOM AND GENERAL NOTES. PAGE 40F4, REVISED/ADDED MAT'L ID P/N. 21MAR12 ALC	UNLESS OTHERWISE SPECIFIED FRACTIONS ±1/16" DECIMALS .X	Drawn by: <i>Int.</i> Date: A.CREECH <i>ALC</i> 07JUN11	IF THIS DOCUMENT IS NOT MARKED "CONTROLLED" IN RED, THEN IT SHOULD BE USED AS REFERENCE ONLY.	<b>M</b> metro WASHINGTON METROPOLITAN AREA TRANSIT AUTHORITY
	B		REMOVED REFERENCE TO WMATA SPECIFICATIONS, CHAPTER 10.0, PAGE 4 06FEB12 ALC		
A	REVISED UPHOLSTERY COVERS AS PER VENDOR PROVIDED DATA. 05JAN12 ALC	ANGLES ±1° UPHOLSTERY ±.25 [6.35]	Approved by: <i>Int.</i> Date: Manuel A. Lopez	Sheet Size: B	Title: 2K/3K & 4K SERIES PAN, FRAME COVER, FOLD-UP, SEAT BOTTOM CAR BODY
-	INITIAL RELEASE. 07JUN11 ALC	Undim. Wall Thk.: Undim. Radii:	Undim. Edges: Scale: 1:0.25	Next Assembly:	Part. No.: L18-11-3121
Rev.	Description & Date				Dwg. No.: WDL18113121-C Sheet: 2 of 6



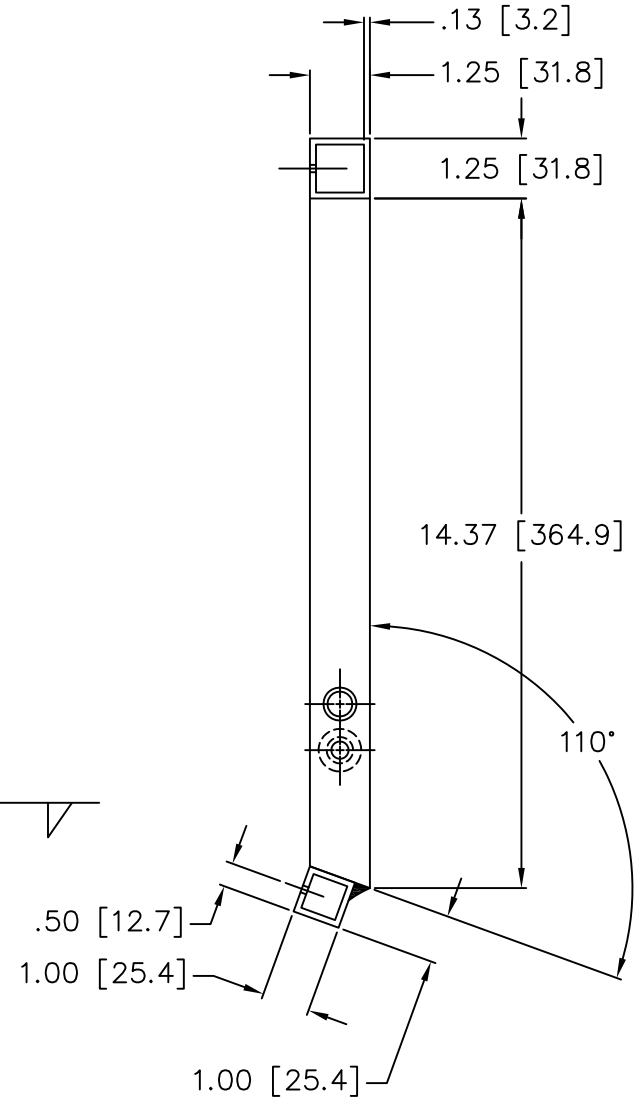
FRAME, FOLD-UP, SEAT BOTTOM (02)  
PART IS SYMETRICAL ABOUT CENTERLINE



BUSHING, FOLD-UP, SEAT ROD (07)  
ENLARGEMENT "A"



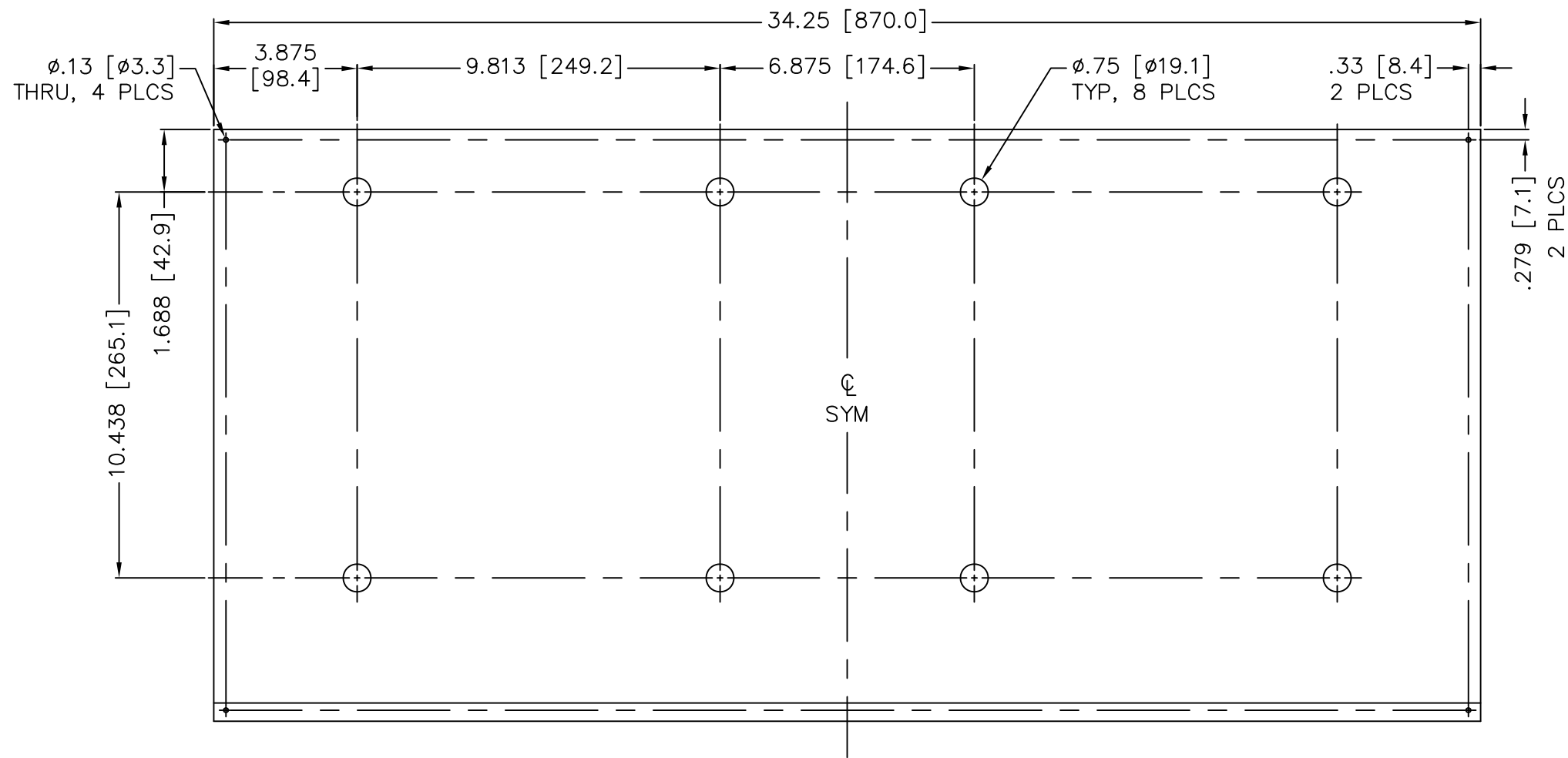
THREADED STANDOFF, WELDED (08)  
ENLARGEMENT "B"



**CONTROLLED**

- GENERAL NOTES:
1. PAINT: SEE APPROVED PRODUCTS, SHEET 6 OF 6.
  2. DEBURR AND REMOVE ALL SHARP EDGES AND CORNERS.
  3. SAMPLES WILL BE PROVIDED FOR PRODUCTION PURPOSES.

C	PAGE 10F4, REVISED BOM AND GENERAL NOTES. PAGE 40F4, REVISED/ADDED MAT'L ID P/N. 21MAR12 ALC	UNLESS OTHERWISE SPECIFIED FRACTIONS ±1/16" DECIMALS .X	Drawn by: Int. Date: A.CREECH <i>ACC</i> 07JUN11	IF THIS DOCUMENT IS NOT MARKED "CONTROLLED" IN RED, THEN IT SHOULD BE USED AS REFERENCE ONLY.	<b>M</b> metro WASHINGTON METROPOLITAN AREA TRANSIT AUTHORITY
	B		REMOVED REFERENCE TO WMATA SPECIFICATIONS, CHAPTER 10.0, PAGE 4 06FEB12 ALC		
A	REVISED UPOLESTERY COVERS AS PER VENDOR PROVIDED DATA. 05JAN12 ALC	ANGLES ±1° UPHOLSTERY ±.25 [6.35]	Approved by: Int. Date: Manuel A. Lopez	Sheet Size: B	Title: 2K/3K & 4K SERIES FRAME, FOLD-UP, SEAT BOTTOM CARBODY
-	INITIAL RELEASE. 07JUN11 ALC	Undim. Wall Thk.: Undim. Radii:	Undim. Edges: Scale: 1:0.25	Next Assembly:	Part. No.: L18-11-3121
Rev.	Description & Date				Dwg. No.: WDL18113121-C Sheet: 3 of 6



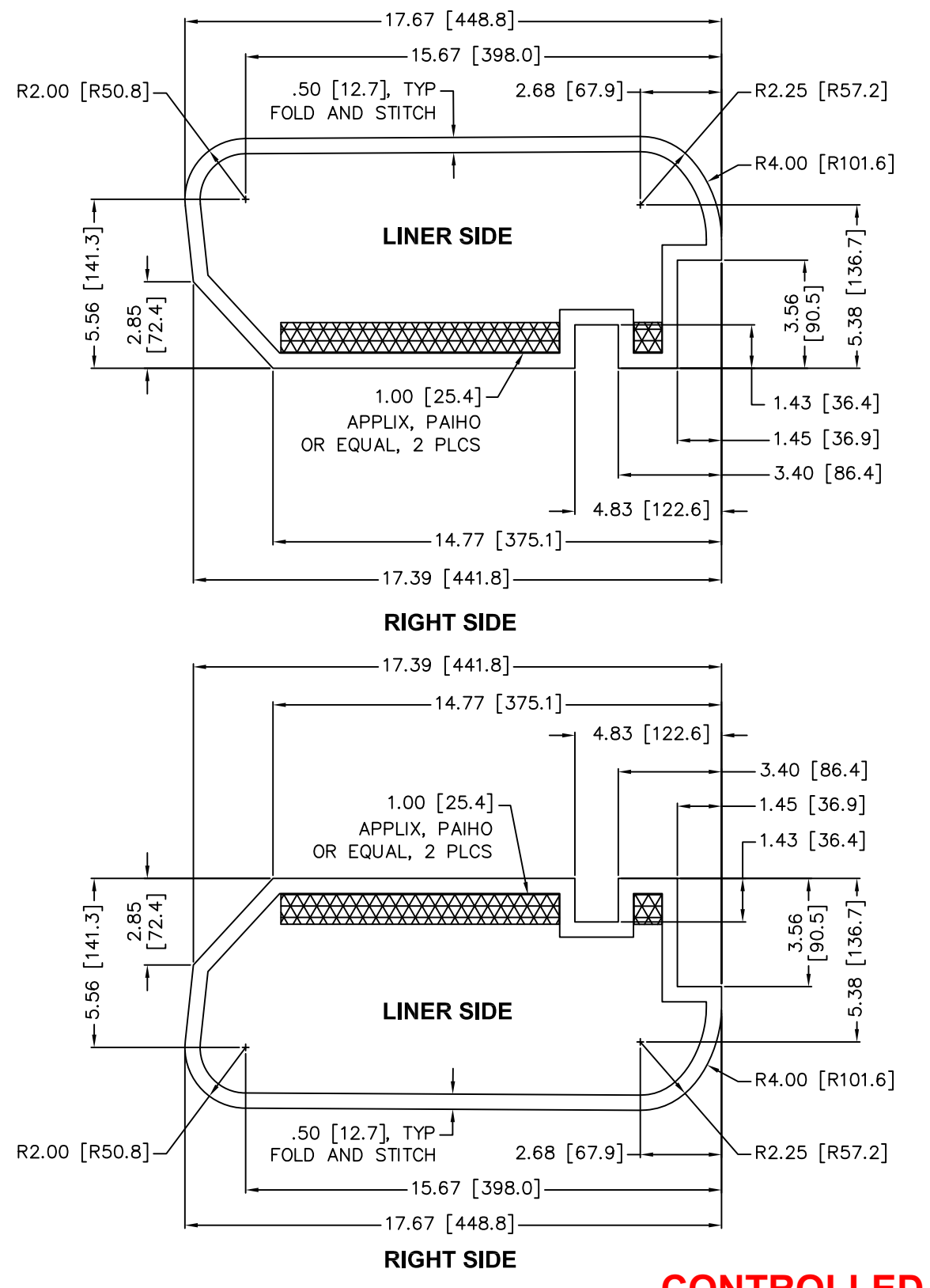
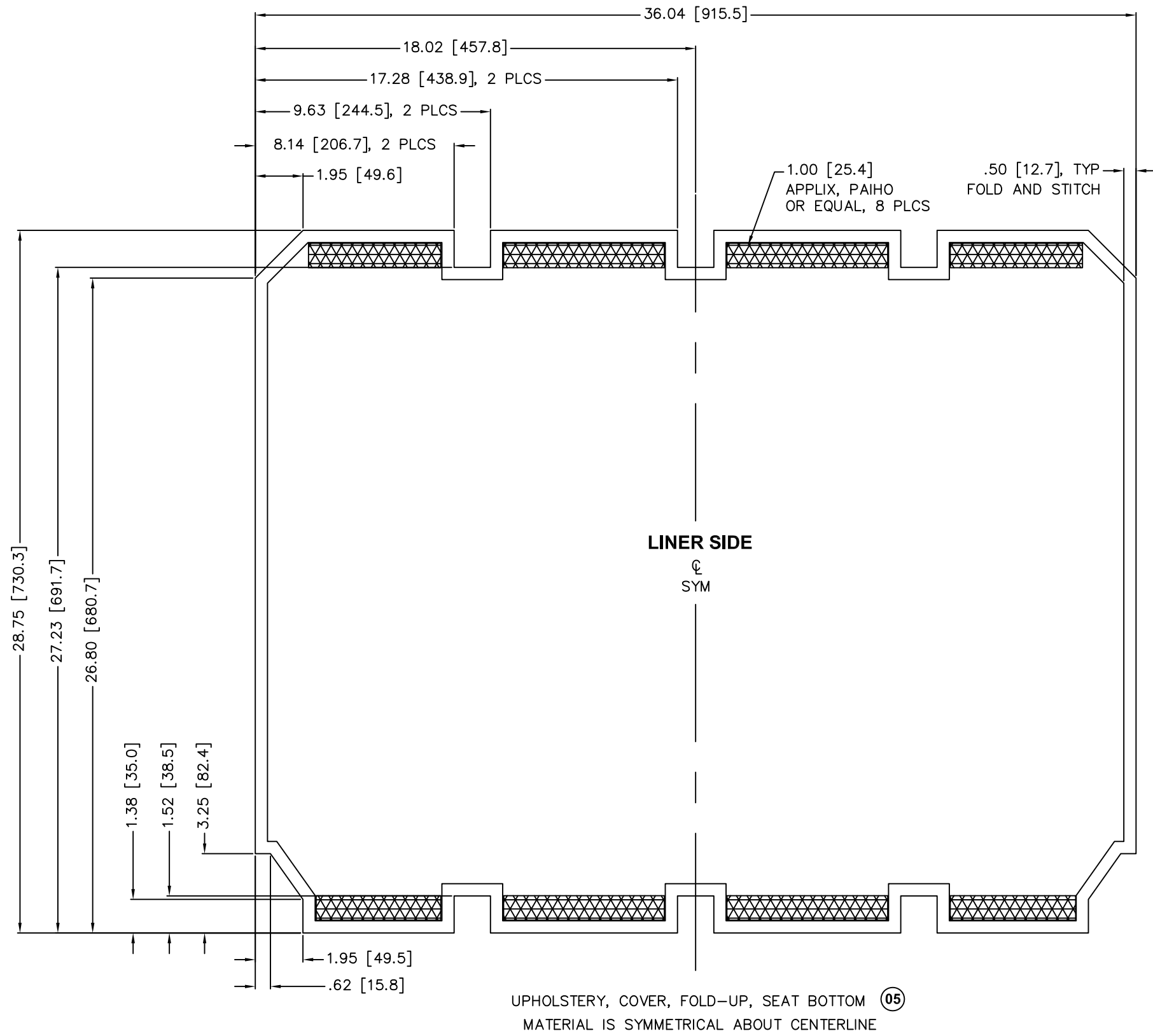
PAN, FOLD-UP, SEAT BOTTOM (03)  
 PART IS SYMETRICAL ABOUT CENTERLINE  
 SCALE: 1:0.25

**CONTROLLED**

GENERAL NOTES:

1. PAINT: SEE APPROVED PRODUCTS, SHEET 6 OF 6.
2. DEBURR AND REMOVE ALL SHARP EDGES AND CORNERS.
3. SAMPLES WILL BE PROVIDED FOR PRODUCTION PURPOSES.

C PAGE 10F4, REVISED BOM AND GENERAL NOTES. PAGE 40F4, REVISED/ADDED MAT'L ID P/N. 21MAR12 ALC	UNLESS OTHERWISE SPECIFIED FRACTIONS ±1/16" DECIMALS .X .XX±.03 [.76] .XXX±.010 [.254]	Drawn by: Int. Date: A.CREECH <i>ACC</i> 07JUN11	IF THIS DOCUMENT IS NOT MARKED "CONTROLLED" IN RED, THEN IT SHOULD BE USED AS REFERENCE ONLY.	<b>M</b> WASHINGTON METROPOLITAN metro AREA TRANSIT AUTHORITY		
		Engr. Approval: Int. Date: Jeffery A. Thompson			THE DESIGN, CONCEPT AND INFORMATION CONTAINED IN THIS DRAWING IS PROPRIETARY TO WASHINGTON METROPOLITAN AREA TRANSIT AUTHORITY AND MAY NOT BE REPRODUCED, USED OR DISCLOSED WITHOUT WRITTEN PERMISSION OF SAID COMPANY.	
		Approved by: Int. Date: Manuel A. Lopez				Title: 2K/3K & 4K SERIES PAN, FOLD-UP, SEAT BOTTOM CAR BODY
		Undim. Wall Thk.: Undim. Radii: Undim. Edges: Scale: 1:0.25				Sheet Size: Next Assembly: B
Rev. Description & Date						



GENERAL NOTES:

- SAMPLES WILL BE PROVIDED FOR PRODUCTION PURPOSES.

C PAGE 10F4, REVISED BOM AND GENERAL NOTES. PAGE 40F4, REVISED/ADDED MAT'L ID P/N. 21MAR12 ALC B REMOVED REFERENCE TO WMATA SPECIFICATIONS, CHAPTER 10.0, PAGE 4. 06FEB12 ALC A REVISED UPHOLSTERY COVERS AS PER VENDOR PROVIDED DATA. 05JAN12 ALC - INITIAL RELEASE. 07JUN11 ALC	UNLESS OTHERWISE SPECIFIED FRACTIONS ±1/16" DECIMALS .X .XX±.03 [.76] .XXX±.010 [.254]	Drawn by: Int. Date: A.CREECH <i>ACC</i> 07JUN11 Engr. Approval: Int. Date: Jeffery A. Thompson	IF THIS DOCUMENT IS NOT MARKED "CONTROLLED" IN RED, THEN IT SHOULD BE USED AS REFERENCE ONLY.	WASHINGTON METROPOLITAN AREA TRANSIT AUTHORITY Title: 2K/3K & 4K SERIES UPHOLSTERY, COVER, FOLD-UP, SEAT BOTTOM CAR BODY Part. No.: L18-11-3121 Dwg. No.: WDL18113121-C <i>Sheet: 5 of 6</i>
	ANGLES ±1° UPHOLSTERY ±.25 [6.35]	Approved by: Int. Date: Manuel A. Lopez	THE DESIGN, CONCEPT AND INFORMATION CONTAINED IN THIS DRAWING IS PROPRIETARY TO WASHINGTON METROPOLITAN AREA TRANSIT AUTHORITY AND MAY NOT BE REPRODUCED, USED OR DISCLOSED WITHOUT WRITTEN PERMISSION OF SAID COMPANY.	
	Undim. Wall Thk.: Undim. Radii: Undim. Edges:	Scale: 1:0.2	Sheet Size: Next Assembly: B	
	Rev. Description & Date	Scale: 1:0.2	Sheet Size: Next Assembly: B	

**CONTROLLED**

**PHYSICAL PROPERTIES, FOAM**

TENSILE STRENGTH:  
 5.0 lbf/in<sup>2</sup> MINIMUM WHEN TEST TO ASTM D-3574 TEST E.  
 ELONGATION:  
 70% MINIMUM WHEN TESTED TO ASTM D-3574 TEST E.  
 COMPRESSION:  
 SET AT 50%, 15% MAXIMUM WHEN TESTED ACCORDING TO ASTM D-1055.  
 FLEX FATIGUE:  
 THICKNESS LOSS 5% MAXIMUM WHEN TESTED ACCORDING TO ASTM D-1055.  
 TEAR STRENGTH:  
 2.0 lbf/in<sup>2</sup> MINIMUM WHEN TESTED TO ASTM D-3574.  
 INDENTATION FORCE DEFLECTION (IFD):  
 INTERIOR SEAT BACK IFD 32±8 lbf  
 INTERIOR SEAT BOTTOM IFD 42±8 lbf  
 DYNAMIC FATIGUE CONSTANT FORCE POUNDING:  
 35 MAXIMUM WHEN TESTED ACCORDING TO ASTM D-3574-95 TEST 13 80,000 CYCLES,  
 IFD LOSS AT .40% DEFLECTION.  
 RESILIENCY:  
 25% MINIMUM WHEN TESTED ACCORDING TO ASTM D-3574-95, TEST H

**SMOKE, FLAME AND TOXICITY REQUIREMENTS**

ASTM D-3675 I<sub>s</sub> ≤25  
 ASTM E-662 D<sub>s</sub> (1.5) ≤100  
 ASTM E-662 D<sub>s</sub> (4.0) ≤175  
 TOXICITY:  
 BOMBARDIER SMP 800-C.

**SEAT COVER CHARACTERISTICS**

**STITCHING**

HIGH QUALITY BONDED NYLON THREAD, LEFT TWIST, LUBED, COLORFAST OR EQUIVALENT. FIVE (5) THREADS PER INCH. BACKSTITCH >1/2" FROM SEAM ENDS INCLUDING VELCRO STITCHING.

**UPHOLSTERY**

THE SEAT UPHOLSTERY MATERIAL SHALL BE MADE OF INDUSTRIAL GRADE FABRIC-BACKED VINYL WHICH IS SUITABLE FOR USE IN THE TRANSIT ENVIRONMENT, MINIMUM WITH A WEIGHT OF 24 OUNCES PER SQUARE YARD.

**SEAT COVER CHARACTERISTICS – CONTINUED**

THE MATERIAL SHALL BE CAPABLE OF PASSING ALL OF THE FOLLOWING PHYSICAL TESTS FOR TEXTILE PRODUCT.

TEST METHOD	DESCRIPTION	CRITERIA
AATCC-1 6A	COLORFASTNESS-200 HRS	CLASS 5 (NO CHANGE)
ASTM D-751	WEIGHT	24 oz./sq.yd. (MIN.)
ASTM D-751	TENSILE STRENGTH (GRAB)	120 MD*x110 CMD** (POUNDS)
ASTM D-751	SEAM STRENGTH	95 MD*x85 CMD** (POUNDS)
ASTM D-751	TEAR STRENGTH (TONGUE)	8 MD*x8 CMD** (POUNDS)
ASTM D-751	ADHESION OF COATING (lb./2in)	6 MD*x6 CMD** (POUNDS)
ASTM D-751	BLOCKING	SCALE RATING NO. 2 MAX. (175°F-30min.)
ASTM D-1308	STAIN RESISTANCE	SCALE RATING NO. 4 MIN.
ASTM D-2097	FLEXING (30,000 CYCLES)	NO CRACKING OR FLAKING
ASTM D-4157-92	ABRASION (500,000 CYCLES)	NO WEAR THROUGH (#8 COTTON DUCK ABRADANT)
ASTM D-5733	TEAR STRENGTH (TRAPEZOID)	30 MD*x30 CDM** (POUNDS)
ASTM E-662	SMOKE GENERATION	D <sub>s</sub> (4.0), </=200 (COATED), D <sub>s</sub> (4.0) </=125 (UNCOATED)
FAR 25.853b	FIRE TEST	SE<10 sec. NO FLAMING DRIPPING
CFFA-6a	COLD CRACK	-20°F MIN.
TOXICITY	BOMBARDIER	SMP 800-C

MD\* - DESIGNATES MACHINE DIRECTION  
 CMD\*\* - DESIGNATES CROSS MACHINE DIRECTION

NOTE: THE STITCH SHALL BE LOCK TYPE IN ACCORDANCE WITH FEDERAL SPECIFICATIONS 30.1

**MATERIAL IDENTIFICATION - SEAT BACK**

**WMATA P/N**


**THREAD COLOR**

CHESAPEAKE SAND T510 SADDLE.....	L18-11-3121, L18-11-3086 V18-11-3121.....	BEIGE E NYLON TYPE 2 CLASS A VT 295E 751Q
BURGUNDY T508 SADDLE.....	N/A .....	WINE E NYLON TYPE 2 CLASS A VT295E 787Q
POTOMAC BLUE T509 SADDLE.....	N/A .....	YALE BLUE E NYLON TYPE 2 CLASS A VT295E 764Q

**APPROVED PRODUCTS**

VINYL – OMNOVA SOLUTIONS, INC.  
 FOAM – CHESTNUT RIDGE FOAM, INC  
 PAINT – **NEW** –POWDER COAT ANSI GRAY (PAS6-C001)  
**REPAIR**–POLYURETHANE SHERWIN-WILLIAMS POLANE,  
 ANSI GRAY OR EQUAL. SAND PRIOR TO PAINT.  
 HOOK-AND-LOOP FASTENER – APPLIX #800 OR PAIHO TRIHOOK

**CONTROLLED**

C	PAGE 10F4, REVISED BOM AND GENERAL NOTES.	UNLESS OTHERWISE SPECIFIED FRACTIONS ±1/16" DECIMALS .X	Drawn by: <i>Int.</i> Date: <i>07JUN11</i>	IF THIS DOCUMENT IS NOT MARKED "CONTROLLED" IN RED, THEN IT SHOULD BE USED AS REFERENCE ONLY.	 WASHINGTON METROPOLITAN AREA TRANSIT AUTHORITY
	PAGE 40F4, REVISED/ADDED MAT'L ID P/N. 21MAR12 ALC		A.CREECH <i>ACC</i>		
B	REMOVED REFERENCE TO WMATA SPECIFICATIONS, CHAPTER 10.0, PAGE 4	.XX±.03 [.76] .XXX±.010 [.254]	Engr. Approval: <i>Int.</i> Date: Jeffery A. Thompson	THE DESIGN, CONCEPT AND INFORMATION CONTAINED IN THIS DRAWING IS PROPRIETARY TO WASHINGTON METROPOLITAN AREA TRANSIT AUTHORITY AND MAY NOT BE REPRODUCED, USED OR DISCLOSED WITHOUT WRITTEN PERMISSION OF SAID COMPANY.	Title: 2K/3K & 4K SERIES TECHNICAL SPECIFICATIONS CAR BODY
A	REVISED UPHOLSTERY COVERS AS PER VENDOR PROVIDED DATA. 05JAN12 ALC	ANGLES ±1° UPHOLSTERY ±.25 [6.35]	Approved by: <i>Int.</i> Date: Manuel A. Lopez		
—	INITIAL RELEASE. 07JUN11 ALC	Undim. Wall Thk.: Undim. Radii:	Undim. Edges: Scale: N/A	Sheet Size: B	Next Assembly: Part. No.: L18-11-3121
Rev.	Description & Date				Dwg. No.: WDL18113121-C Sheet: 6 of 6